

Hardbook SoftPLC™ Processor

Cat. No. HB4-HPLA-x

General Description

Hardbook SoftPLC's are open architecture controller CPU's that can connect to a wide variety of I/O and communication networks. Hardbook SoftPLC's are customized at the factory to application specific configurations and include hardware assembly, driver installation, system software configuration, and system level testing.

Hardbook SoftPLC models differ only in the discrete I/O capacity (see table). Analog or special purpose module I/O channels allowed are limited only by the selected hardware, not the SoftPLC. For Tealware I/O, allow for 16 discrete points for every 4 analog channels, input or output respectively based on the module type. For Allen-Bradley Remote I/O, allow for 16 discrete input points and 16 discrete output points per block transfer module.

Hardbook SoftPLC Features

Hardbook SoftPLC's include the rich set of functions provided by SoftPLC Control Software, including:

- ◆ Powerful Ladder Logic instruction set
- ◆ Loadable Instructions for specialized or user-written functions
- ◆ Unlimited user application memory for logic and data table
- ◆ All application documentation resides in the SoftPLC CPU
- ◆ Wide variety of I/O Drivers - ModbusTCP, Tealware™, Profibus,



Rear View

DeviceNet, A-B RIO, many others

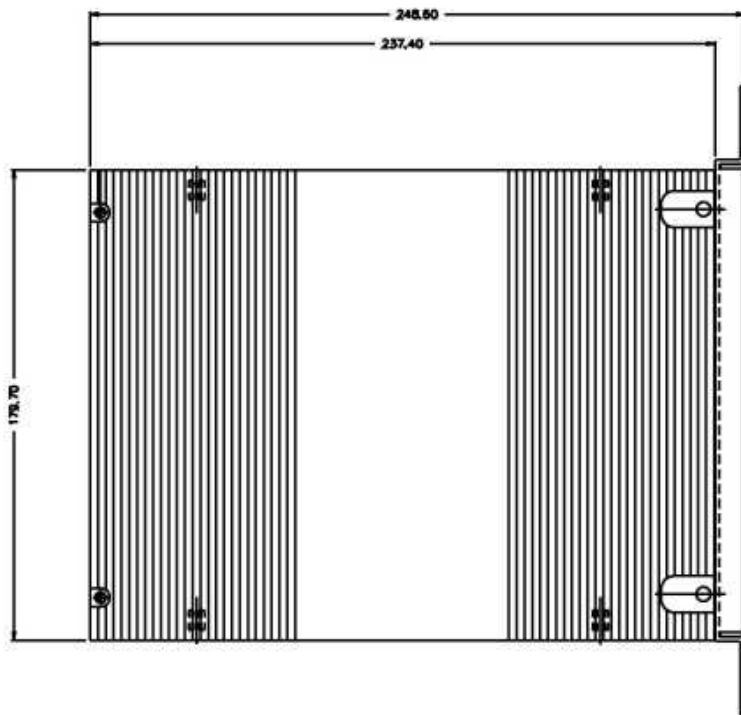
- ◆ Communication Drivers - A-B Ethernet, DF1, Modbus serial, ModbusTCP/UDP, others
- ◆ Compatible with all HMI/SCADA products
- ◆ Embedded Gatecraft™ Firewall technology
- ◆ Ladder logic/data table addressing similar to Allen-Bradley PLC-5/SLC-500 with import/conversions available
- ◆ (2) Ethernet, (4) Serial, (4) USB communication ports
- ◆ Heavy Duty Metal Enclosure with mounting brackets
- ◆ Fanless operation
- ◆ Removable Compact Flash
- ◆ (4) PCI Expansion slots for I/O or other interfaces
- ◆ Optional internal solid state/hard disk, 2nd Compact Flash disk (internal)

Available Models & I/O Capacities

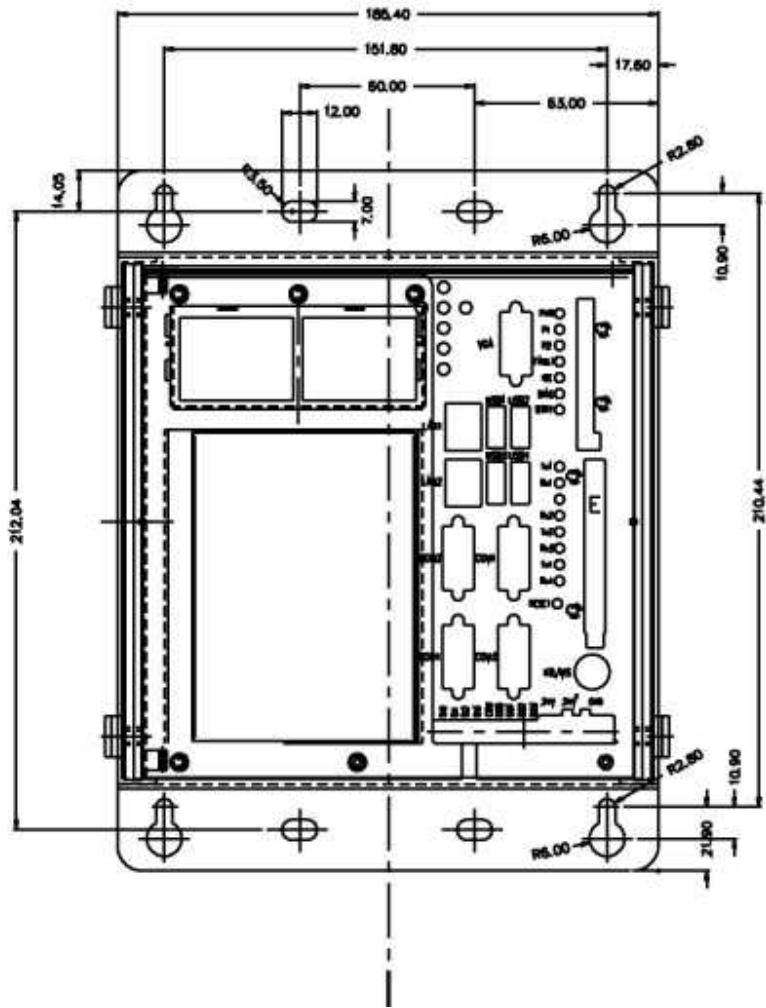
Catalog Number	Discrete Inputs	Discrete Outputs
HB4-HPLA-1K	up to 1024	up to 1024
HB4-HPLA-2K	up to 2048	up to 2048
HB4-HPLA-8K	up to 8192	up to 8192

Hardbook SoftPLC Specifications

Hardbook HB4-HPLA-x Specifications		
System Hardware		
CPU	1GHz	
Memory	512MB RAM	
Storage	128MB removable Industrial Compact Flash card, expandable to 8GB	
Expansion/Options	(4) PCI slots, internal 2.5" HDD optional, internal Compact Flash	
I/O Interfaces		
Ethernet	(2) 10/100MB ports, RJ45	
Serial	(2) RS-232 ports (2) RS-232/422/485 ports, 9 pin D-sub	
USB	(4) USB 2.0 ports	
Other	Fault/Status LED's Fault/Status LED's	
Power Supply		
Type	Internal AC Adapter included	
Power Requirement	72W (w/ no PCI cards)	
Input	16-36VDC	
Enclosure		
Construction	Heavy Duty Aluminum, Fanless	
Mounting	Panel Mount Brackets included	
Dimensions (LxWxH)	7.1 x 9.3 x 7.0 in	180 x 237 x 179 mm
Weight (approx.)	11 lbs	5 kg
Environmental		
Operating Temp	-20 ~ 55°C	-4 ~ 131°F
Storage Temp	-20 ~ 80°C	-4 ~ 176°F
Humidity	5 ~ 95%, non-condensing	
Standards	CE/FCC/RoHS	



Recommended Options	
ICO-PS12024	Din Rail Mount Power Supply, 120W, 24VDC
SPZ-WEB	SoftPLC Embedded Web Server
GCL-x	Gatecraft™ Link Industrial Ethernet Switch
ICO-PSC96-24	Uninterruptible Power Supply
ICO-SSx	Surge Suppression Equipment
TDNG-FN-x	TOPDOC NexGen Development/Maintenance Software



HB4-HPLA-x Mounting Diagram
(Dimensions in mm)