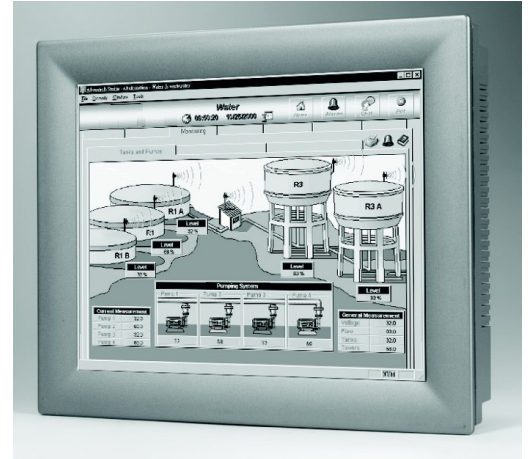


SoftPLC™ Web Studio HMI

Catalog Numbers - SSH-80C, SSH-80CL, SSH-80X, SSH-80XL

General Description

SoftPLC Web Studio HMI's (Cat. Nos. SSH-x) are rugged graphical operator interfaces with a high resolution touchscreen display. Shallow depth, fanless design, and industrial packaging make these HMI's suitable for a wide range of applications and mounting options. SSH HMI's can be used in applications ranging from simple machine controls to complete SCADA systems, in industries such as packaging, utilities, discrete manufacturing, batch/continuous processing, HVAC, and many more.



HMI Features

All SSH HMI models use the same powerful SoftPLC Web Studio development software, and the same application can be downloaded to any SSH HMI. Loaded with features, yet easy to use, applications can include:

- ◆ Object oriented graphic displays with customizable objects
- ◆ Extensive graphics library, or use imported files from over 15 formats
- ◆ Data Logging & Reporting
- ◆ Real-time & Historical Trending
- ◆ Alarm & Recipe Management
- ◆ Tag database with variety of data types
- ◆ Programming via flexible scripting language with over 100 functions
- ◆ Automatic language translation (Unicode supported)

In addition to the physical HMI system, the runtime application screens can be viewed simultaneously on a remote computer that connects over a TCP/IP (Internet/Intranet) web link, through the built-in Client/Server architecture. Any Client screen that displays data based on Tag values will be automatically updated whenever a Tag changes value on the Server (HMI). Security and encryption of web data is supported. A single Client session is included with each SSH unit, additional concurrent sessions can be purchased.

Two types of Web Clients are supported:

- ◆ Web Clients allow access from a common Web Browser (eg: Microsoft Internet Explorer, Netscape or Firefox). This is useful when browsing to multiple web sites may be required, such as in a desktop environment.
- ◆ Thin Clients (Secure Viewer-Based Browser) only allow access through a dedicated browser (included) that allows connection to a Web Studio Server, but the capability to browse to alternative web sites is not allowed. This provides additional security for plant-floor or dedicated supervisory applications.

Hardware Features

All SSH HMI models include these state-of-the-art features, at no extra cost:

- ◆ High Resolution TFT Touchscreen display with 260K or more colors (64K for SSH-30Cx/60Cx)
- ◆ Bright display with wide viewing angle
- ◆ Ethernet, Serial & USB communication ports
- ◆ Removable Compact Flash (SSH-30Cx has SD flash)
- ◆ Fanless operation, NEMA4/IP65 front panel
- ◆ Suitable for industrial environments, 0-50°C (32-122°F)



25603 Red Brangus Drive, Spicewood, TX 78669
512-264-8390 or 800-SoftPLC (US/Canada)
FAX: 512-264-8399 info@softplc.com

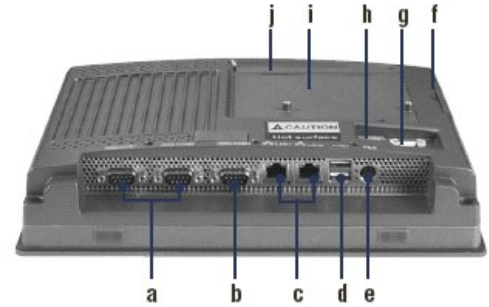
www.softplc.com

Specifications				
	SSH-80C	SSH-80CL	SSH-80X	SSH-80XL
Functionality				
Database Tags	150 tags	1500 tags	150 tags	1500 tags
Multiple Port Connectivity	1 driver	3 drivers	1 driver	3 driver
System Hardware				
CPU	1GHz CeleronM			
LAN	(2) 10/100Base-T			
Serial	(2) RS-232, (1) RS-232/485/422			
USB	(2) USB 2.0			
Other	(1) PS/2			
Memory	512MB DDR SDRAM		1GB DDR SDRAM	
O/S	WinCE		WinXPe	
Expansion Slots	(1) HDD/SDD (1) PCI-104		(1) Compact Flash (1) PCI-104	
Storage	256MB Compact Flash		2.5GB SDD	
Watchdog Timer	1 sec (system)			
LCD Display				
Type	VGA TFT LCD			
Size	8"			
Max. Resolution	640 x 480			
Max. Colors	64K			
Luminance cd / m²	350			
Viewing Angle (H / V)	130/120			
Backlight Life	50,000 hours			
Contrast Ratio	250:1			
Touchscreen				
Lifespan (min.)	1M activations			
Light Transmission	Above 75%			
Resolution	Linearity			
Type	8-wire, analog resistive			
Environment				
Humidity	10 ~ 95% RH @ 40°C, non-condensing			
Ingress Protection	Front Panel: NEMA4, IP65			
Vibration Protection	2 Grms, (Random, Operating)			
Operating Temp.	0 ~ 50°C, 32 ~ 122°F			
Storage Temp.	-20 ~ 60°C, -4 ~ 140°F			
Certifications				
BSMI, CCC, CE, FCC, UL				

Mechanical	
Dimensions	11.26 x 8.9 x 2.28 inches, 286 x 26 x 58 mm
Panel Cut-Out Dim.	279.5 x 219.5 mm
Weight (Net)	3.5 kg, 7.72 lbs
Enclosure	Die-Cast Aluminum Alloy
Cooling System	Fanless Design
Power Consumption	33W
Power Input	18 ~ 32VDC

Recommended Options	
ICO-PS6024	Din Rail Mount Power Supply, 60W, 24VDC
GCL-x	Gatecraft™ Link Industrial Ethernet Switch
ICO-SSx	Surge Suppression Equipment
SSD-x	Studio Development Software
SSR-WSx	Web Thin Client License for x concurrent sessions (IE6.0 or later)
SSR-SVx	Thin Client License (Secure Viewer-based Browser) for x concurrent sessions
SS-BSS	SoftPLC Studio Technical Support/Update Plan

SSH-80x Rear View



- a. COM (RS-232)
- b. COM (RS-232/422/485)
- c. LAN (10/100/1000)
- d. USB 2.0
- e. PS/2
- f. CompactFlash
- h. Power Switch, Power Receptor
- i. HDD Cover
- g. Fuse (3.15A)
- j. PCI-104

SSH-80x Mounting Diagram

Unit: mm

