

TOPDOC NexGen Data Sheet

Cat. No. TDNG-FN

General Description

TOPDOC NexGen makes SoftPLC programming and continued maintenance fast and easy. The sleek user interface design means both infrequent and “power” users have the features and functions they need.



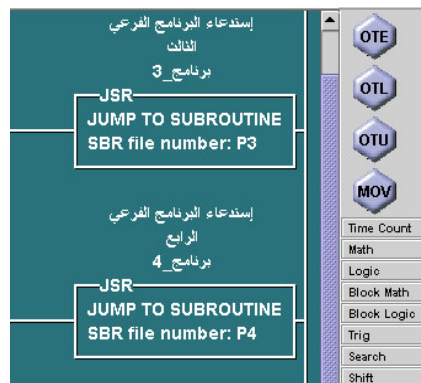
Standard Functions

- Ladder logic program and documentation development - both offline (local) and online (remote)
- Online SoftPLC monitoring & troubleshooting
- SoftPLC Configuration
- Logic and data table reports
- Import/export utilities

TOPDOC®, since 1984, has been recognized as the industry’s most advanced PLC program development and documentation software product. Many “industry firsts” have been attributed to TOPDOC.

TOPDOC NexGen is the “Next Generation” of the software, providing a contemporary and complete set of tools for SoftPLC® based systems, and continuing the tradition of providing innovative features for PLC users:

- Program logic & documentation are combined into a single file that is downloaded to the SoftPLC controller - no more hassles to keep both sets of files “in-sync” or trying to troubleshoot a system with no documentation
- Use either Windows or Linux on your development computer
- XML export/import of application files - allows easy auto-generation or re-use of applications
- Program “Clips” for easy re-use of standard logic sequences
- Native character support for other languages than English



*Native Language Character Support
(eg: Chinese, Arabic, Russian)*

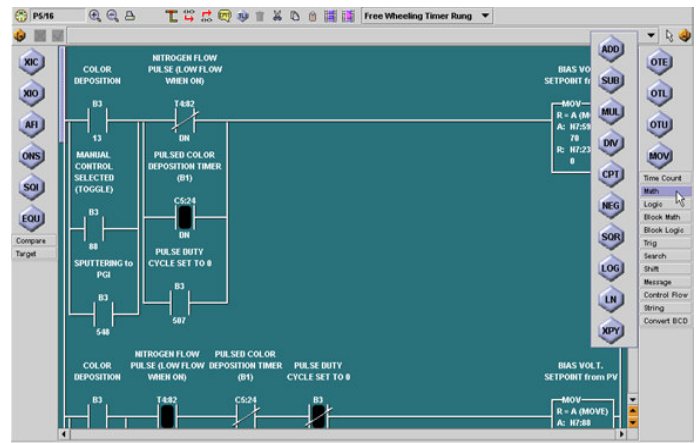


Application (APP) Editing

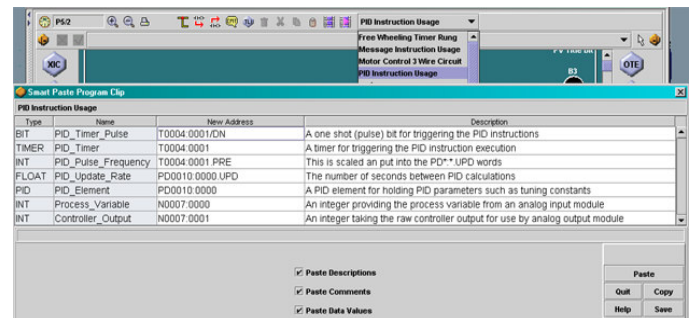
TOPDOC provides a comprehensive APP editor for both remote (online) and local (offline) use. Within the APP editor you can create/modify ladder logic, data table, and program documentation. You can create programs offline, then download to your SoftPLC's. You can also work directly online connected to a SoftPLC to create, monitor, and modify programs. Instruction/Data Entry are easy:

- Enter/edit logic and data with simple point/click interface
- “Scroll Recall” feature retrieves prior entries for easy editing and reuse
- Copy/paste rung(s), or portions or rungs
- “Smart Paste” feature lets you build a library of common logic functions with spreadsheet interface for easily reuse with new addresses and/or descriptions

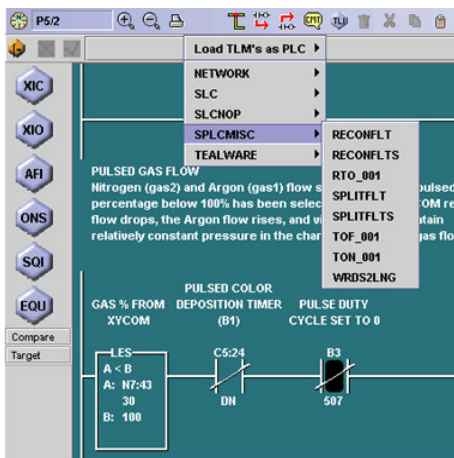
TOPDOC also automatically learns about any user loadable instructions (TLI's) in SoftPLC, and adds them to the instruction menus.



APP Editor



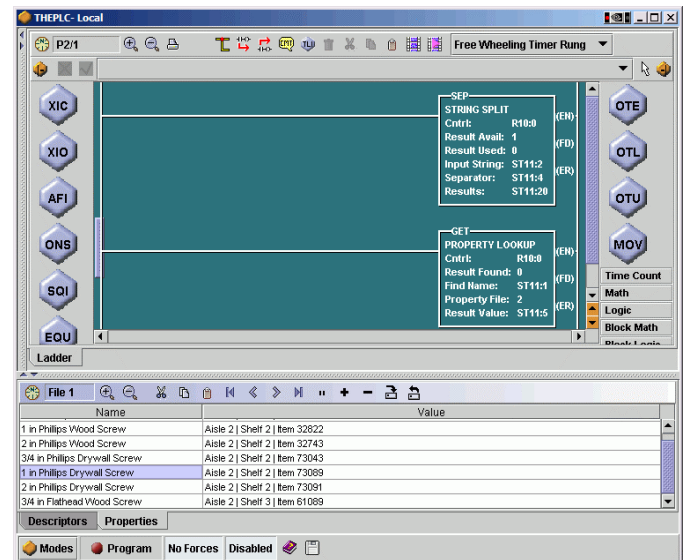
Smart Paste Clip Editor



Documentation/Reports

Rung comments are virtually unlimited in size. The first line of a rung comment can also become a searchable “subtitle” in a program. Program files and data table files can be documented with short and long descriptions.

Address descriptors include a tagname and a long description and are easily edited in a spreadsheet style interface, or can be easily created/edited in an external program and pasted in.



Properties Editor

The Properties Editor makes it easy to edit property file entries, also using a spreadsheet style user interface.

A Ladder Diagram Report and Data Table Report can be printed, including to .pdf format.

Monitoring/Troubleshooting

A number of features are available for SoftPLC system maintenance:

- Search by address, instruction, or instruction/address combination by direct reference or with wildcard specifications, searches are saved for easy “trace” function capability
- Search by rung number, program file number, or program file subtitle
- I/O forcing from ladder or force table editors, including block insert/remove of forces
- Status file monitoring, fault analysis, and other features make it easy to determine causes of problems
- Data table editor multiple data formats, “spinners” for easy field editing, quick undo function to return to prior value on bit manipulation
- Data table “watch windows”

PLC Configuration

TOPDOC includes a complete SoftPLC configurator which is used to set up TCP/IP communications parameters, other drivers, select and configure TLM's (I/O drivers and loadable functions), start-up parameters, and more. The PLC Configurator makes it easy to map non-native I/O to a SoftPLC system, such as DeviceNet or Profibus. Other functions include:

A “Detect on Net” function makes it easy to see which SoftPLC's are on the network, and to perform an easy configuration backup of all PLC's. Other features include:

- BOOTP Server for initial configuration
- Tealware I/O Configuration
- Powerloss action selection

Requirements/Ordering Information

Order by Cat. No. TDNG-FN.

System Requirements:

- Operating System - Win32 or Linux
- Minimum Screen Resolution 800x600 (1024x768 or better is strongly recommended)
- 15MB free disk space for TOPDOC program files
- 40MB free disk space for Sun JRE (if not already installed)
- Ethernet port
- USB or Parallel port

SoftPLC Corporation
25603 Red Brangus Drive
Spicewood, TX 78669 USA
512-264-8390, Fax 512-264-8399



www.softplc.com